

**Membership is open all year, if you haven't yet joined please do!!** Help support View Ridge PTA, thanks to all who have already joined!

Our next **general membership meeting is on January 11th.** Social time 6:30pm meeting starts at 7pm.

We are still looking for someone to "chair" the following events:

- Cultural Event
- Field Day
- Legislative Rep
- Lost and Found

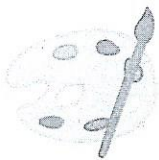
If you are interested please contact Leslee at [lhammer5@yahoo.com](mailto:lhammer5@yahoo.com).

---

## After School Class Sign-ups

After school enrichment programs will be offering our winter session beginning the fourth week of January. Registration will open after the holiday break. Flyers for classes will be sent home before the break. Classes make a great gift this season, give the gift of experience with your View Ridge PTA sponsored after school programs!

Tuesday's will be art, with a new project each week. Wednesday's will be a fitness style gym game class (more information to come) and Thursday's we will be offering computer coding. Look for registration forms later this month with all the final details. Please contact Andraya Hallgren with any questions: [Andrayaleann@msn.com](mailto:Andrayaleann@msn.com) or 425-330-8277



**Tuesday**  
Art Class



**Wednesday**  
Fitness Class



**Thursday**  
Computer  
Coding Class

---

## "Boys Only" Reading

"Boys Only" Reading is off to a great start. We are hosting over 30 boys every Friday morning in the library! Boys are invited to come to the library beginning at 8:45 am. They are treated to a small snack and a cup of water, a guest reader reads from 9:00-9:10 and then they are dismissed to pick up their mess and go to class. If they wish, Boys are able to check out library books and take AR tests from 8:45-9:00. If you are interested in being a reader for "Boys Only" Reading, please email Kari Eggink, our librarian, [keggink@everettsd.org](mailto:keggink@everettsd.org).

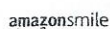
---

## Support View Ridge Elementary Every Day

Support us

when you shop  
for Back to School

Shop at [smile.amazon.com](http://smile.amazon.com)  
and Amazon donates.



Did you know that **Amazon** will donate **0.5%** of the price of your eligible purchases to **View Ridge PTA** whenever you shop through their **AmazonSmile program**? Simply use (and bookmark!) this link <http://smile.amazon.com/ch/91-1095591>.

*AmazonSmile is just a different portal to the same Amazon you know. Same products, same prices, same service. Start using it today for our school!*

### Nondiscrimination statement

The district shall provide equal educational opportunity and treatment for all students in all aspects of the academic and activities program without regard to race, color, national origin, creed, religion, sex, sexual orientation, gender expression, gender identity, veteran or military status, the presence of any physical, sensory or mental disability or the use of a trained dog guide or service animal by a student with a disability. Designated to handle inquiries about nondiscrimination policies are: Affirmative Action Office – Carol Stolz, [cstolz@everettsd.org](mailto:cstolz@everettsd.org), 425-385-4106 | Title IX Officer – Randi Seaberg, [rseaberg@everettsd.org](mailto:rseaberg@everettsd.org), 425-385-4104 | 504 Coordinator – Becky Ballbach, [rballbach@everettsd.org](mailto:rballbach@everettsd.org), 425-385-4063 | ADA Coordinator – Becky Clifford, [bclifford@everettsd.org](mailto:bclifford@everettsd.org), 425-385-5250. Address: 3900